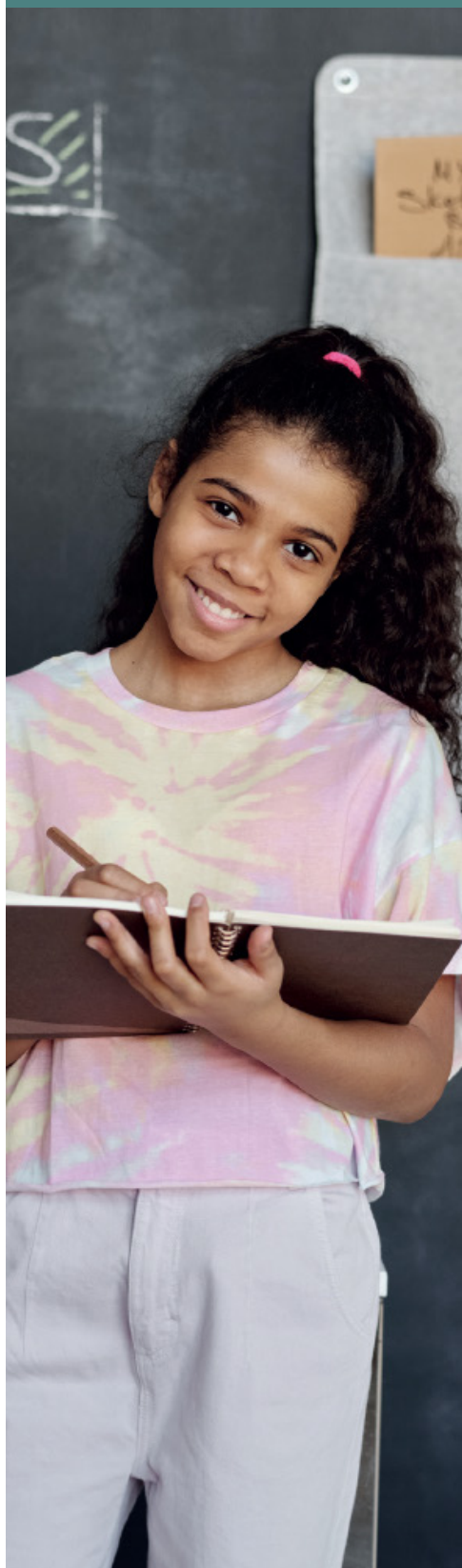


# PROGRAMS & SERVICES | 2023



Every Child Deserves  
a Quality Education

# TABLE OF CONTENTS



- 3** Our Vision/Mission/History
- 4** Our Programs
- 6** Whole School Transformation
- 8** Professional Learning and Consulting
- 10** Quality Review (QR) Preparation Services
- 14** Development of Career Connected Learning Pathways/  
Career Technical Education (CTE)
- 15** Possibility Development Career and College Readiness
- 16** Building & Sustaining Parent Engagement
- 17** Project B.O.O.S.T: Building Options and  
Opportunities for Students
- 18** Coding
- 19** Robotics
- 20** Esports
- 22** Academic Tutoring
- 23** Arts Education Programs for Students,  
Teachers and Families
- 24** Rise: College Students Serving as Middle School  
Youth Leadership Mentors
- 26** Community School Partnerships
- 28** CEI-SyncGrades



## Our Vision

CEI believes the school should be the center and driving force of public education, innovation, and reform. Every child deserves a quality education.

---

## Our Mission

With a focus on equity and innovation, CEI works directly with school leaders, teachers, students, and families to create high performing schools in under-resourced communities to help children succeed.

## Our History

The Center for Educational Innovation (CEI) is a nonprofit organization that carries forward the history of two respected public education organizations: The Center for Educational Innovation (CEI) and the Public Education Association (PEA). CEI was established in 1989 to transform public education by shifting accountability from bureaucracies to schools as a means of creating public school choice for communities. PEA was founded in 1895 and worked for systemic and sustainable reform of the city's public school system. Together, the organizations' histories mark some of the most important milestones for advancing New York City's public school system.

CEI has continued this legacy and to date, has provided high quality services and programs to over 2200 schools and impacted over 1 million students. CEI's approach continues to build on the understanding that the school is the central hub for creating new life within our most neglected communities. CEI is proud of our continued work in pursuing excellence for all through innovative practices and programs and in disrupting the inequalities that have historically limited opportunities for children in our most under-served communities. We will not stop until every child receives the high quality education they deserve.

## Our Programs

**Innovation Based on Experience:** Providing quality education requires constant innovation. CEI is a clearinghouse for best practices, innovation, and new ideas. CEI staff members build on decades of successful practice in the public schools, serving as teachers, principals, and superintendents. CEI's leadership is comprised of passionate and diverse educators with experience at every level of public education from the classroom to district, state, and federal organizations. This on-the-ground expertise allows CEI to provide valuable support to public schools to improve outcomes for all students.

CEI's programs are aligned with National Standards for rapid school improvement and for building and sustaining trust in public education. Integral to our process is assessing, refining and sustaining what is working within the school to accelerate learning and to promote positive student outcomes. CEI identifies strategic ways to sustain school goals and mission by intentionally using DEIA/SEL/TRC frameworks to ensure purposeful collaboration and school-wide community building.

Finally, CEI collaborates with our partner organizations, colleges and universities and elected officials to identify new opportunities for student learning, student personal as well as academic growth and development and college/career pathways. Specifically, CEI's model for rapid school transformation, as is illustrated below:



### 1 REIMAGINING THE STUDENT EXPERIENCE

CEI collaborates with our partner school/district to identify new opportunities for student learning, student growth and college/career pathways. Our programs are designed to be open-ended, collaborative and multidisciplinary studies allowing each student to take the lead in their own learning and offer extensive opportunities to learn valuable technical and employment skills paired with high-level academic coursework. CEI Arts Education presents experiential, hands-on arts programs that engage students in major social issues and connect them with the greater community. Our DEIA/SEL work extends learning beyond the four walls of the classroom, by addressing student trauma, highlighting cultural narratives, fostering self-awareness, and learning how to maximize community resources to support school leadership goals.

### 2 HIGHLIGHTING, SCALING, SUSTAINING AND RESTORING WHAT WORKS

Using our “assets-mapping” approach, CEI concentrates on building up and sustaining what is working in a school in order to accelerate learning for all students. Using Bryk’s root cause analysis and P-D-S-A cycles of improvement, CEI trains schools in how to make rapid gains and bring those gains to scale across the entire school community. CEI’s professional learning workshops and series are on the cutting edge of evidence-based, research-driven curricula and pedagogy, infusing culturally responsive strategies to ensure students are authentically engaged and meaningfully challenged. Many of our student-facing programs have been proven to increase attendance, satisfaction in school and academic achievement.

### 3 **PRIORITIZING WELLNESS AND ITS LINK TO STUDENT SUCCESS**

Students learn best when they see themselves and their potential future in their learning. With a laser focus on DEIA/SEL/TRC practices, CEI's total school transformation process centers everyone's attention on the "whole child" - there is no "hierarchy" of importance - every aspect of a child's development and health is equally explored and investigated to create actions plans WITH students that promote their happiness and success in life.

CEI's PL offerings include a plethora of topics related to wellness, including: social-emotional learning and development; trauma-informed school cultures and classrooms; critical response/support team development; restorative practices; diversity, equity and inclusive (DEI) environment "audits" with follow-up training; and culturally responsive instruction that builds student identity and self-advocacy.

### 4 **ENGAGING FAMILIES TO BE TRUE PARTNERS**

Families engage with their child's school more when they see a direct real world benefit.

Our DEIA/SEL/TRC approach promotes collaboration and inclusion by illustrating creative ways to pay attention to the voice of students and their families. Our CEI workshop offerings are designed to increase parents/families' understanding of the programs and systems within their school community, leading to greater, more authentic involvement in their children's education.



Customized Services | Expanded Technical Assistance | Enhanced Professional Learning Presentation Formats include Mentoring | Workshops | Walkthroughs | Collaborative Conversations/Book Study | Coaching | Faculty Conferences | Staff/Team/Cabinet Meetings

# Whole School Transformation

## Overview

With more than four decades of experience, CEI has been creating and redesigning public schools to help achieve our vision of creating a public-school system where every child has access to a high quality, 21st century education. CEI works with all public schools, from district-based schools to charter public schools, to help them establish rigorous AND supportive learning environments that meet the needs of the students in their communities. Our support begins with an extensive “asset mapping” audit that focuses on strengths to be developed, rather than on perceived “gaps” in schools too often labeled as “underperforming” when in reality they are often most likely to be “underfunded” and “underserved.” This process creates the roadmap for our customized support to meet the specific needs of each school, including on-site, job embedded assistance as well as consultative support with experts in curriculum and pedagogy, data analysis, school leadership, organizational development, human capital, regulatory compliance, marketing and fiscal operations.

*Specifically, our Total School Transformation process examines and provides direct feedback and support in four key areas:*

### 1 INSTRUCTIONAL DESIGN —STUDENT-CENTERED MODEL SCHOOLS

**Includes:** Analysis/audit of standards-aligned curricula in all content areas; mastery or standards-based grading; best practices in rigorous, challenging, brain-compatible instruction; culturally relevant/sustainable pedagogy; social-emotional well-being and trauma informed/trauma responsive learning environments and praxis; early warning systems for identification of students' needs with aligned individualized Instructional action plans; authentic, empowered student “voice and choice” across all aspects of school life; and, equitable opportunities for all students.

### 2 HUMAN CAPITAL MANAGEMENT

**Includes:** Executive coaching and mentoring for administrators and staff; distributive leadership; talent recruitment, development, evaluation and retention; Professional Learning Communities(PLCs); student recruitment, enrollment and retention; and, authentic parent/family engagement.

### 3 SYSTEMS THINKING

**Includes:** School vision, mission, core beliefs and Instructional Focus; data collection and analysis based on Bryk/Carnegie Foundation's root cause analysis and P-D-S-A cycles for rapid improvement; operational support (finance, compliance, etc); and, school marketing and branding.

### 4 COMMUNITY PARTNERSHIPS

**Includes:** University partnerships; local CBO outreach and engagement for enhanced student opportunities; elected officials outreach and engagement.

## Target Audience

Any school or district. “Turnaround School” expertise is offered, as well as assisting schools in “good standing” with how to grow from “good to great”.



## Learning Objectives/Intended Outcomes

- To enable school leaders to lead their communities with intention to new levels of excellence and innovation
- To develop common language among all stakeholders on the purpose, priorities and pathways for school excellence
- To develop key strategies to accelerate learning for all students
- To create strong action plans for improvement with authentic, measurable outcomes of student success, including indicators for social-emotional well-being as well as academic metrics



# Professional Learning and Consultant Services

## Overview

CEI PROFESSIONAL LEARNING (PL) is designed to build educator (school leaders, teachers, coaches, support staff) capacity to accelerate learning and improve student outcomes. CEI's PL engages school members through job-embedded coaching, mentoring, workshops, curricula and pedagogy audits, in-depth data analysis, Professional Learning Communities (PLCs), and summer institutes. CEI consultants collaborate with teachers and school leaders to refine and adapt leadership skills and instructional practice for in-person, hybrid, and remote learning. Topics are developed in full collaboration with participants to ensure that needs, interests and concerns are being addressed. CEI has a team of high-quality experts that cover the gamut of school issues.

### *Examples of areas for Professional Learning and Consulting for the classroom teacher and teacher teams include:*

- Authentic Assessment that Guides Instruction
- Blended Learning
- EC Literacy and Numeracy
- Sheltered Instruction Observation Protocol (SIOP)
- Constructing Mathematical Discourse
- Reading and Writing Practices for All Content Areas
- Next Generation Standards-Key Shifts in ELA, Math, Science/STEAM and content areas
- Standards-Based/Mastery Grading
- Rigorous Instruction and DOK
- Neuroscience and Effective Classroom Instruction
- Culturally Responsive Teaching (The 5 Pursuits)
- Growth Mindset and Executive Function
- Trauma-Responsive Praxis: Creating "Safe Spaces"
- Universal Design for Learning (UDL), Differentiated Instruction (DI) and Specially Designed Instruction (SDI)

## FOR SCHOOL LEADERS, PL OFFERINGS HAVE INCLUDED

- Creating Shared Vision, Mission and Core Values
- Effective and Efficient Communication and Decision-Making
- Refining Instructional Focus and Priority Areas
- Education with an Equity Lens (The 5 Pursuits)
- Creating a Data Driven Culture
- Building a Strong Literacy Culture (K-12)
- Building Conceptual Understanding in Mathematics and STEM classrooms
- Effective Use of the Danielson Framework for Teacher Growth
- Leadership Capacity Building (Admin and Teacher Leaders)
- Team Building for a Collaborative Culture
- MTSS: How Supports such as AIDP, PBIS and RTI All Fit Together
- Social Emotional Learning (SEL), Wellness and Equitable Practice in the Classroom
- Building your "Quality Review" Narrative (unique to NYCDOE schools)

*Please note: for all workshops, series and ongoing coaching support, Continuing Teacher/ Leader Education (CTLE) credit is available.*

## Target Audience

Any member or group within the school and/or district community. Our services are targeted directly to the needs of those seeking services



## LEARNING OBJECTIVES/INTENDED OUTCOMES

- To increase participants' knowledge, understanding and ability to implement new practices that will accelerate student learning
- To ensure that participants have the opportunity to explore topics and concerns that directly relate to their practice and that will accelerate student learning
- To facilitate the engagement of parents, families and other community members in the task of creating authentic pathways for students
- To build schools that celebrate (not "tolerate") diversity and that are "proving grounds" for disrupting injustice and creating equity for all



# Quality Review (QR) Preparation Services

Our QR Preparation Service is designed to provide you and your team with the necessary tools to build narratives that emphasize the strengths and unique qualities of your school. Our team is composed of former QR reviewers and arbitrators, as highly respected former principals and superintendents. Together with your school team, we will help you craft the narrative of your school that maximizes the ways in which you address each of the indicators under the ten QR components. Through our unique use of “asset-mapping” aligned to the 2022-2023 Quality Review Rubric, our team will conduct a thorough review and provide an in-depth analysis of your school policies, priorities and practices, combined with a step-by-step action plan for optimal results. Included in our service to your school are three additional visits to assist you and your team in monitoring implementation progress, and in making adjustments. We are committed to your success and most importantly, to the success of your students!

## CEI's Quality Review Preparation Services: **BUILDING YOUR QR NARRATIVE**

### SETTING THE FOUNDATION

<b>INDICATORS</b>	3.1 School Level Theory of Action and Goals Shared by School Community	3.4 Establishing a Culture of Learning that Communicates High Expectations with Supports

### DEVELOPING THE VISION/MISSION IN THE DAILY LIFE OF THE SCHOOL

<b>INDICATORS</b>	1.4 Structures for Positive Learning Environment, Inclusive Culture and Student Success	1.1 Rigorous, Engaging and Coherent Curricula Aligned w/NextGen Standards	1.2 Research-Based, Effective Instruction That Yields High Quality Student Work

### SUPPORTING THE MISSION AND VISION

<b>INDICATORS</b>	4.2 Teacher Teams Engaged in Collaboration Using the Inquiry Approach to Improve Instruction and Student Outcomes	1.3 Aligned Use of Resources to Support Instructional Goals That Meet Student Needs

### MONITORING FOR FIT AND PROGRESS

<b>INDICATORS</b>	2.2 Curriculum-Aligned Assessment Practices That Inform Instruction	4.1 Support and Evaluation of Teachers Using Feedback	5.1 Regularly Evaluate School Level Decisions

### ROAD MAP

#### STEP 1

Initial meeting to review CEI's model for school asset mapping and prioritization aligned to the new QR Rubric

#### STEP 2

Conduct an asset map using the new QR rubric to identify strengths, and areas for development. (Minimum: 2 days)

#### STEP 3

Select strategies and develop an action plan with specific foci and priorities. (Minimum: 1 day)

#### STEP 4

Review plan and make adjustments, provide support to achieve and sustain progress. (Minimum: 3 return visits)

## Target Audience

Any principal and School Leadership Team looking to maximize their QR results



## What principals are saying...

*CEI's expert consultants really helped my team and I understand the dimensions of the QR in a new way, and enhanced how we demonstrate "to the max" our school's uniqueness and strengths! We were very happy with the results we achieved!*

**—Bronx Elementary School Principal**

*I have been very satisfied with the services provided by CEI's team and have relied on their comprehensive and invaluable ongoing support. They have truly been an asset to our whole school community!*

**—Brooklyn Middle School Principal**

## Target Audience

Any principal looking to maximize their PPO results



## What principals are saying...

*The CEI team was able to provide me with very specific, targeted ways to improve my leadership practices. We engaged in substantive conversations aligned to the MPPR document that was very beneficial for both my own understanding and that of my admin and instructional team.*

**—Bronx Elementary School Principal**

*I really enjoyed the time I had with the CEI team in examining all of the small details of the MPPR that made a world of difference in how my leadership is viewed. It really shaped my “story” and led to terrific outcomes.*

**—Brooklyn Middle School Principal**

# DEVELOPMENT OF CAREER CONNECTED LEARNING PATHWAYS/CAREER TECHNICAL EDUCATION (CTE)

## Overview

CEI will provide school leaders and teachers with ongoing, high-quality support for developing and improving CTE programs in participating schools. CEI will support the development and improvement of CTE programs of study through strategic planning, professional development, and leadership coaching. CEI will provide support for all aspects of CTE, including:

### *CTE Program Design and Development (Electives, Full Sequences, and NYSED CTE approved program support)*

1. Partnership Development (Industry, College)
2. Accountability and Data Management (Technical Assessments, Scholarship)
3. Work Based Learning (WBL) (Internships, Externships, site-based visits)
4. Teaching and Learning (Project based learning, Interdisciplinary Learning, and Literacy)

## Target Audience

School leaders interested in developing and improving Career and Technical Education programs of study



## LEARNING OBJECTIVES/INTENDED OUTCOMES

- Participants will learn how to develop academically integrated learning experiences for students through project based and interdisciplinary learning.
- Participants will learn how to develop real world experiences for students through work-based learning and site-based learning.

# POSSIBILITY DEVELOPMENT CAREER AND COLLEGE READINESS

## Overview

Drawing from the fields of person-centered and cognitive-behavioral counseling, as well as the developmental notions of scaffolding and skill development, Possibility Development (developed by UPenn GSE professor Mike Nakkula), can be distilled into five discrete steps: (1) Exploring personal interests; (2) Prioritizing interests to pursue based on a values assessment or what matters most; (3) Planning for action, including establishing goals to organize the pursuit in the short and longer terms; (4) Action: putting the plan into action, starting with the establishment of realistically attainable short-term goals, while learning how this process relates to longer-term goals; and (5) Assessment: assessing progress toward goal achievement and potentially changing course if the process has led to such a decision.

Through our program, students learn to achieve what they care about most by learning and applying the steps of Possibility Development to the common goal of College and Career readiness. Our app-based program gives students agency over their educational journey as they visualize and then create a plan to achieve their post-secondary school goals.

CEI supports every student in your school or district by first presenting the program through an in-person, one-hour, dynamic presentation to onboard your students and motivate the program. Through our support, exciting weekly homeroom activities, and parent engagement tools students are supported each step of the way as they create a plan for their future success.

## Target Audience

Grades 6-11, School Counselors and Leaders



## LEARNING OBJECTIVES/INTENDED OUTCOMES

- To teach students how to achieve what they care about most
- To enable students to create a plan around their college and career readiness goals

# BUILDING & SUSTAINING PARENT ENGAGEMENT

## Overview

The Center for Educational Innovation (CEI) will collaborate with schools to design and implement highly-effective programs and initiatives where parents, school staff, other community agencies and organizations are committed to actively work together to support and improve the academic and social emotional development of all students.

***CEI will provide support for 'ESPC' programs that include workshops, webinars, activities and events for school staff, parents, students and community members, such as:***

- Activities and Events for Families
- Asset Mapping
- Attendance Improvement
- Collaboration with Local Agencies and... Organizations
- College and Career Readiness
- Community School Forum
- Creating Safe and Welcoming School Environments
- Developing a FACT Program (Families and Children Together)
- Diversity, Equity and Inclusion
- Early Childhood
- Family Fun Events and Activities
- Health and Nutrition
- Job-Embedded Learning Opportunities
- Leadership Training for Parents
- Leadership Training for Students
- Parent Engagement and Empowerment Workshops
- Parent Interest Survey(s) / Student Interest Survey(s)
- Partnership Planning and Development
- Physical and Mental Health and Wellness Supports
- Robotics and Coding and E-Sports
- Social-Emotional Learning (SEL) and Well-being
- Teaching and Learning Info Sessions for Parents (all content areas)
- Yoga and Physical Fitness

## Target Audience

School leaders, staff, parents, students and communities who are interested in connecting, learning and sharing their programs, resources and materials



## LEARNING OBJECTIVES/INTENDED OUTCOMES

*Participants will have a better understanding of:*

- The developmental stages of children's social, emotional, physical, intellectual and academic development positively impact each stage of development
- How to develop personal skills, such as self-esteem, self-awareness, decision-making, relationship-building and cultural awareness
- How parent and community involvement positively increase student attendance and impacts student achievement
- How workshops that create networks among parents can develop or enhance the entire school community's skills and sense of belonging

# PROJECT B.O.O.S.T: BUILDING OPTIONS AND OPPORTUNITIES FOR STUDENTS

## Overview

Building Options and Opportunities for Students is CEI's signature enrichment program which helps students gain the skills and talents necessary for long term growth and success. The Project BOOST model provides academic support, social and emotional skills support, cultural enrichment and community engagement.

Project BOOST provides character building experiences, nurturing individual aspirations and communicating the possibilities for unlimited success, regardless of background. Academic support includes interactive, hands-on STEAM instruction, coding and robotics, academic goal-setting, and college visits.

The program includes customized museum learning experiences aligned with curriculum through partnerships with institutions such as the Bronx Zoo and the New York Hall of Science.

In addition, Project BOOST provides social emotional support and teaches social skills. Ongoing guidance includes age-appropriate activities focused on personal goal setting, team-building, character education, and employment skills. BOOST is designed to serve the school and community's needs and can be integrated into the school day, after school and even includes activities on nights and weekends. The experiences that students gain in these programs are often life-altering for them.

Among the aspects of the programs that students highlight as keenly important to them are the unique experiences that they feel are otherwise beyond their reach, the value of gaining one-on-one mentoring and guidance, a sense of increased self-esteem, gaining positive values, and a recognition of the importance of academic commitment and achievement.

## CEI'S PROJECT BOOST CORE VALUES

Project BOOST incorporates a holistic approach to education, with an emphasis on:

- Identifying challenges and nurture talents, interests, and values
- Developing enhanced Social-Emotional Intelligence through Culturally Responsive Teaching
- Strengthening College and Career Readiness
- Identifying and connecting career pathways to long term goals
- Preparing students for the world of work by fostering 21st Century Workforce skills
- Disrupting inequities and reduce barriers to opportunity

# CODING

## Overview

CEI's robotics programs are designed to break down students' common misconception that robotics isn't for them. Through CEI's Code Your Own Video Game Program students learn how to code and create their video games. Students are led through the basic programming concepts, using a block coding infrastructure, as they work through all the fundamentals of coding.

Students learn that not only are video games fun, but they are also multidisciplinary. The games students build incorporate math, physics, and art in meaningful and enjoyable ways.

What's especially exciting for the students is that by the end of the 10 to 20+ hours course, they have built their own game they can play and share with friends and family. Most importantly, they've gained the confidence that they can succeed at coding.

## Target Audience

Grades 2 through 12



## LEARNING OBJECTIVES/INTENDED OUTCOMES

*Our Coding Program will provide students with:*

- Confidence that they can succeed at coding and STEM
- A basic understanding of the fundamentals of coding
- The experience of building their own sharable, video game from scratch

# ROBOTICS

## Overview

CEI's robotics programs are designed to break down students' common misconception that robotics isn't for them. Through CEI's Code Your Own Video Game Program students learn how to code and create their video games. Students are led through the basic programming concepts, using a block coding infrastructure, as they work through all the fundamentals of coding.

Students learn that not only are video games fun, but they are also multidisciplinary. The games students build incorporate math, physics, and art in meaningful and enjoyable ways.

What's especially exciting for the students is that by the end of the 10 to 20+ hours course, they have built their own game they can play and share with friends and family. Most importantly, they've gained the confidence that they can succeed at coding.

## Target Audience

Grades 2 through 12



## LEARNING OBJECTIVES/INTENDED OUTCOMES

- **Engineering:** Students learn to identify parts and their purposes by examining robots and their applications.
- **Coding:** Students engage in critical, sequential thinking while learning programming syntax in a block-style software environment.
- **Design:** Using the Design Process framework, students learn the connection between the applied need and system design.
- **Collaboration and Communication:** Students work in teams to build and resolve design issues for open-ended challenges. The program is a 6 to 12 week program and assumes no prior background in Robotics or Coding.

# ESPORTS

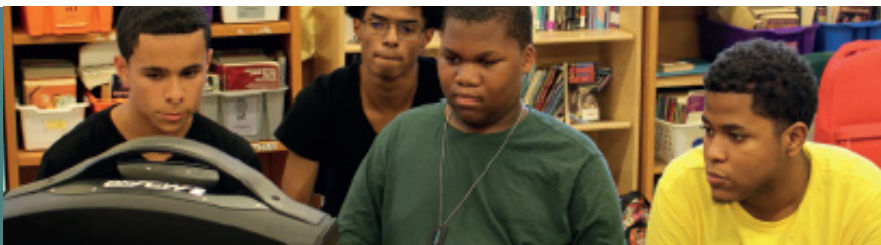
## Overview

CEI ESPORTS is an innovative program designed to bridge the gap between traditional education and the burgeoning field of Esports. CEI Esports strives to give students not only essential knowledge of the history of various sectors of Esports but also create a classroom culture that reinforces the social-emotional skills the students are not practicing while gaming at home with their friends. More specifically, CEI Esports works with the students to strengthen their interpersonal communication, teamwork, leadership, and problem-solving skills needed to succeed not only in Esports but also in their everyday life.

This occurs through the presentation of a unique and extensive curriculum created solely by CEI Esports and through the after-school competitive esports programs also provided by CEI Esports. In addition, CEI has the staff and experience to provide schools with their own customized Esports Team and accompanying Esports Lab/Arena. Finally, the CEI Esports program continuously works towards building not just better students, but better people who will have the character and knowledge to succeed in college and/or any other ventures they may have after high school.

## Target Audience

Grades 6-12 + Teachers



## LEARNING OBJECTIVES/INTENDED OUTCOMES

- Provide schools with the appropriate equipment and training to be able to play & compete in some of the most popular titles causally and competitively.
- Expose students to competitive Esports in various titles including NBA 2K, Super Smash Bros, and FIFA with the opportunity to formalize school teams.
- Provide a one-of-a-kind esports program that includes lessons on topics such as the History of Esports, Gamer Health, Evolution of Consoles, Digital Citizenship, Branding, & streaming to name a few!
- Work with students on social-emotional learning topics including, but not limited to, Leadership, Effective Communication, Sportsmanship, Building Confidence.

# ACADEMIC TUTORING

## Overview

CEI's Academic services provided much needed academic coaching and social emotional support for students while reinforcing and expanding the work of classroom teachers.

Our coaches are experienced with knowledge in all content areas as well as Regents, SAT & Act and AP test prep. We customize the program to meet the needs of each school and their students.

## Target Audience

Grades K through 12



## LEARNING OBJECTIVES/INTENDED OUTCOMES

- Through participation in tutoring services, students will demonstrate greater competency and confidence in their subject matter.

# ARTS EDUCATION PROGRAMS FOR STUDENTS, TEACHERS AND FAMILIES

## Overview

CEI Arts Education is nationally recognized for its innovative, hands-on arts integration programs that use the arts to teach core content and strengthen social emotional learning skills. All CEI Arts Education programs are aligned with National Standards, for Teaching and Learning in the Arts.

### *CEI Arts Education presents a wide range of programs:*

- Student arts residencies include social action programs such as Benchmarks in which students are empowered to have a voice on community issues through the power of art, culminating in a citywide exhibition of bench murals in parks to effect social change. There are many other student programs including pop-up books, board games, graphic novels, mobiles, portraits, and tapestries among others, all of which teach core content.
- Our professional learning workshops show teachers how to utilize the arts as effective instructional strategies to directly teach academics.
- Our family engagement programs bring parents into the school community and include educational arts projects that parents can replicate with their children.

## Target Audience

Pre-K12 Students, Teachers and Families



## LEARNING OBJECTIVES/INTENDED OUTCOMES

- **STUDENTS** — To learn academic skills and strengthen SEL skills through creating art projects
- **TEACHERS** — To learn how to utilize arts-based instructional strategies to directly teach core content and strengthen SEL skills
- **PARENTS** — To learn educational arts projects to replicate with their children and to bring parents into the school community

# RISE: COLLEGE STUDENTS SERVING AS MIDDLE SCHOOL YOUTH LEADERSHIP MENTORS

(RESPONSEABILITY+INTEGRITY+SELF-ADVOCACY+EXCELLENCE)

## Overview

Overview: The RISE program is designed to match two college students (one male, one female) for 8–12 hours/week at a middle school to serve as “mentors” to MS students in order to develop student-centered initiatives such as:

- Student Council or Student Government Organization (SGO)
- Peer Mediation/Conflict Resolution
- Restorative Circles
- Community Service/Community Engagement Projects

The College Mentors are vetted (interview, references, background check/fingerprint clearance) prior to working in the schools. They must make a commitment to the full year, or 30 weeks (15 per semester). They must be in the school for 8-12 hours/week (actual hours determined by the school). The RISE team will host a yearly leadership conference for teams from each participating school. Each college mentor will receive a stipend and they must maintain good academic standing at their college to continue in the program. Training will be provided prior to the start of their mentoring in the schools, and at mandatory trainings through the year, covering topics such as: Adolescent Development; Communication Skills and Active Listening; Goal-Setting, Action Planning and Work Project Management; Time Management; De-escalation Strategies and Mindfulness Practices; Personal Boundaries, Confidentiality, and Self-Disclosure; The CASEL framework for Social-Emotional Learning (SEL); Peer Mediation/Conflict Resolution; Restorative Circles; and, Robert’s Rules of Order for governing organizations. School leaders will determine the area(s) of focus for the College Mentors within a given school.

The College Mentors will be expected to maintain time sheets and a weekly log of activities. Schools will be asked to select a member of the staff to serve as their facilitator/advisor (main point of contact). This staff member will: meet initially with the College Mentors to develop priorities and goals (approved by the Principal); develop a process for dealing with urgent situations (approved by the Principal); meet bi-weekly for a check-in with the College Mentors for at least 30 minutes; and, sign off monthly on timesheets and activity logs.

The College Mentors will be supervised by staff from CEI and will be visited at least twice per month at the school site. These staff members will be available at all times to the designated Advisor or the Principal to discuss the Mentors, the program or any other issue or concern.

## Target Audience

Middle School Students



## LEARNING OBJECTIVES/INTENDED OUTCOMES

- To provide a unique opportunity for College students and MS students to interact, and to collaborate on and implement programs that are authentic to their lives and communities
- To free up time and staff within the school for academics and other pursuits by having the College Student Mentors assume responsibility for student advocacy programs, events and functions
- To create a collaborative network of student leaders within and across districts to exchange ideas, to present projects and to grow from interacting with one another

# COMMUNITY SCHOOL PARTNERSHIPS

## Overview

CEI specializes in Educating Children and Building Successful Communities of Practice. A Community School serves as the center of the neighborhood or the 'central hub' where resources are available to support the needs of children, parents and the school community. Access to programs and services, like health care, mentoring, after school programs, expanded learning programs, and other services engage children, families, and strengthen the entire community and we at the Center for Educational Innovation (CEI) pride ourselves in cultivating relationships with schools, families, and communities, to ensure children are physically, emotionally, and socially prepared to learn.

Additionally, because each Community School is unique, we start by conducting a local assessment of needs and assets with staff, families, students, and community members. We then tailor the combination of programs and services to the needs, strengths, and priorities of the school and community. This collaborative approach builds support and sustainability for community schools and creates opportunities for learning that draw on the strengths and knowledge of the surrounding communities.

We are successful in the work that we do within schools because of the mutually beneficial and mutually respectful relationships that we have cultivated with principals, School Leadership Teams (SLT), Parent/Teacher Associations (PTA), other school-based committees, and local agencies. Our work centers around using the 'Collaborative Leadership and Practices' model, which has centered our collective conversations around the goals and objectives in each school's Comprehensive Education Plan (CEP). While specific programs and services vary according to the needs of each school, we are able to offer a multi-tiered platform of services that are centered around learning, innovation, exploration, diversity and equity, academic enlightenment, and technological enhancement. Our targeted approach to sustainable, measurable, attainable, reliable, and timely outcomes are what makes CEI a nationally recognized educational and innovative community-based organization. We measure our impact and success by utilizing a data-driven outcome-based approach which encompasses integrating the '4 Pillars of Community Schools' model. The direct services and supports that we provide to schools support the 'central hub' and the entire school community.

# The 4 Pillars of Community Schools

## 1 INTEGRATED STUDENT SUPPORTS

Includes mental and physical health care, nutrition support, housing assistance, and other wraparound services. These resources and programs are coordinated by CEI utilizing outside organizations to provide services to meet students' and families' needs as well as to address structural barriers to students' educational success and academic achievement. The type of services that agencies and organizations can offer ranges from tutoring, housing, food assistance, dental care, vision care, physicals and hearing screenings and other supports based on the needs of the school community. In addition, if a school needs additional support for referrals for outside mental health support, CEI will assist schools with identifying a health care provider that can offer mental health services for students at their school site and/or provide families with a referral for support outside of the school building for individual and group counseling.

## 2 EXPANDED AND ENRICHED LEARNING TIME

Includes lengthening the school day and year and enriching the curriculum through real-world learning opportunities. The programming of services takes place outside the traditional school day—after school, on weekends, or during the summer. In addition, CEI can provide instruction or individualized tutoring as well as enrichment or other meaningful learning opportunities during the school day (see #3).

## 3 ACTIVE FAMILY AND COMMUNITY ENGAGEMENT

Includes a meaningful partnership with parents and family members to support children's learning by implementing strategies to improve school-family communication by offering parent workshops and information on how to support children's learning at home. In addition, we offer workshops to support the needs of parents, such as resume writing, computer literacy, GED courses, and other workshops the parents request. We also provide family activities and events that include Family Fun Nights, coding, robotics, eSports, basketball, soccer, step dancing, yoga/fitness, curriculum nights, Community School Forums, 'Coffee and Conversation with the Principal', parent workshops, town hall meetings, multi-cultural events, parent-led focus groups, 'Parents as Leaders' groups, 'Family and Children Together' (FACT) activities including Do-It-Yourself take-home art projects, and College and Career Readiness events.

## 4 COLLABORATIVE LEADERSHIP AND PRACTICES

Includes coordination of community school services, SLT teams, and teacher learning communities. Community schools employ structures that share responsibility and decision-making within school buildings and across many sectors to support children's well-being. This can include the school district, local agencies, and community organizations.

### Target Audience

Elementary Schools, Middle Schools and High Schools





## Introducing CEI-SyncGrades!

**CEI-Syncgrades is a dynamic Learning Management System that integrates with every major SIS, and will allow you to do the following:**

- Automate the creation and maintenance of all Google Classrooms
- Automatically add in new admits and remove transferred students, parents/ guardians, and co-teachers assigned to a class
- Define marking period properties (i.e. start and end dates, category names, and weights)
- Bidirectional grading to and from Google Classroom (Assignments and Grades seamlessly move from Google Classroom to CEI-SyncGrades and from CEI-SyncGrades to Google Classroom)
- Calculate student averages from assignments and grades generated in either Google Classroom or CEI-SyncGrades
- Course and School-level Progress Reports
- Report Card Generation
- Anecdotal Logs
- Analytics
- Attendance
- Automated Grade Notifications
- Parent/Student Portal access to grades, attendance, and historical test data
- Emails and Mass Communication Functions
- SMS Text Messaging (Coming in the Fall)
- Set and define grading templates and grades (1–4, 0–100, Pass/Fail, A–F, A–F +/-, 55–100 by 5s, and 55–100)
- Utilizes Advanced Asymmetric Encryption Standards, SSL Encryption, Robust Authentication, and Next-Generation Firewalls (NGFW) to protect and secure all Personally Identifiable Information (PII)

## CEI-SyncGrades' Benefits...



Seamless Integration



Grades, Attendance & Behaviors



Google Classroom



Remote Learning Ready

*Schedule a live demo of the Sync Grades suite of products and services and receive a 40% discount on your subscription.*

Paul C. LoBoen | 914-233-7602 | [paul@syncgrades.com](mailto:paul@syncgrades.com)



*Visit us at...*



Michael Kohlhausen, President & Chief Executive Officer

EDUCATION • INNOVATION • EQUITY

212.302.8800 | [www.the-cei.org](http://www.the-cei.org)